



## PEX: The logical choice for plumbing systems compared to copper pipe

When it comes to plumbing a home or building, builders, installers and owners agree—crosslinked polyethylene (PEX) tubing is the most durable, cost-effective and logical choice.

### Flexible

PEX tubing offers the tightest bend radius of any plumbing product on the market—as little as  $3\frac{1}{2}$ " for  $\frac{1}{2}$ " tubing. This eliminates the need for fittings and connections with each change of direction, and fewer fittings reduce your liability for leaks and problems.

### Durable

The re-pipe business has never been better with all the pinhole leaks in copper caused by harsh-water conditions. Because PEX resists the damaging effects of harsh-water conditions, it is usually the top choice for re-pipe jobs.

### Reduced liability

In addition to fewer fittings for reduced liability, PEX tubing cannot be dry-fit,\* eliminating concerns that a connection is made.

\*When using cold-expansion ASTM F1960 fittings.

### Resists freeze damage

Because PEX tubing can expand and contract, it is less susceptible to freeze damage compared to rigid copper pipe.

### Sustainable

A 2008 life cycle study\*\* showed PEX requires less energy to produce and has an overall lower carbon footprint compared to copper.

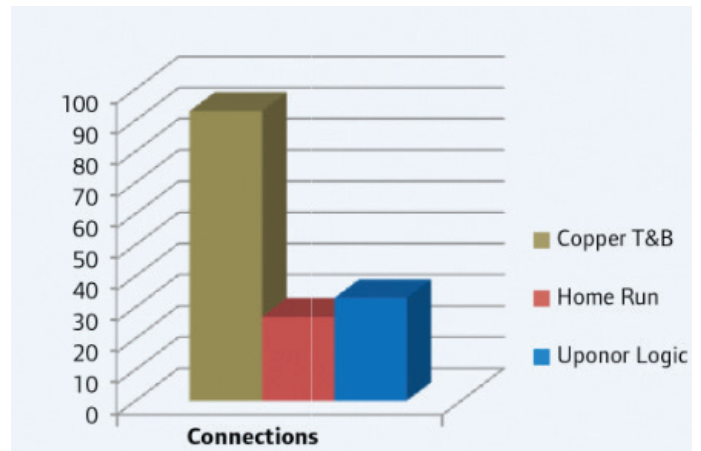
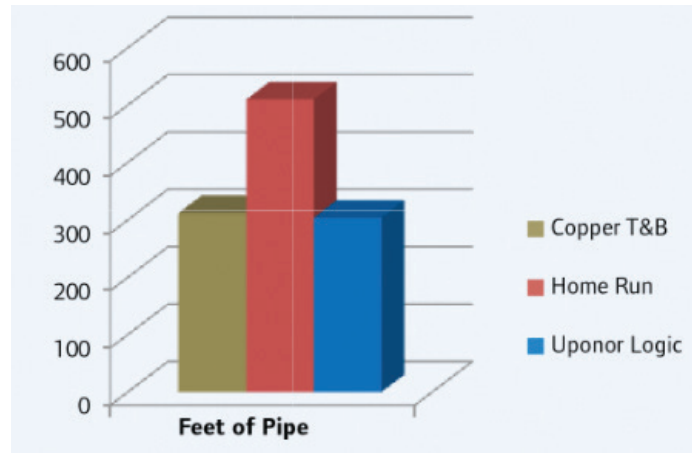
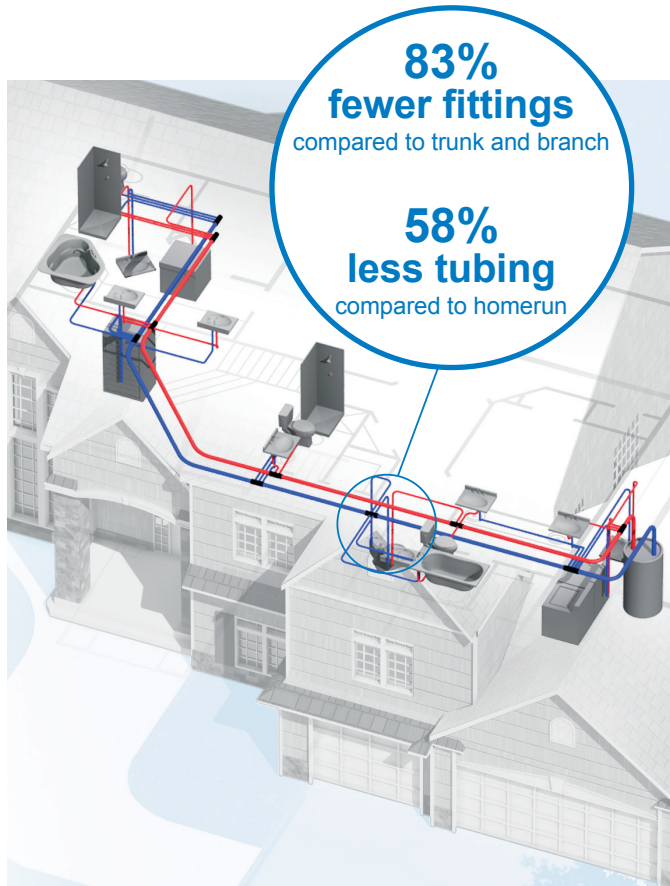
\*\*Source: "Life Cycle Inventory of the Production of Plastic Pipes for Use in Three Piping Applications", Franklin Associates, 2008.



# Uponor Logic makes sense

Uponor Logic is the smart way to plumb, using flexible Uponor PEX pipe and multiport tees to minimize connections and maximize system performance. With an Uponor Logic layout, plumbing systems typically require fewer fittings than a trunk and branch design and less pipe than a home run design.

**Note:** The charts at right are based on a residential dwelling with a kitchen and two bathrooms.



## Comprehensive offering

PEX tubing and fittings are available in sizes from 1/4" up to 3" to meet any application need.

## Safe for your plumbing system

Best of all, PEX tubing is tested in accordance with NSF/ANSI Standard 61: *Drinking Water System Components—Health Effects* and meets or exceeds the health requirements for potable-water products in the U.S. and Canada.

### Uponor, Inc.

5925 148th Street West  
Apple Valley, MN 55124  
USA

T 800.321.4739  
F 952.891.2008

### Uponor Ltd.

2000 Argentia Rd., Plaza 1, Ste. 200  
Mississauga, ON L5N 1W1  
CANADA

T 888.994.7726  
F 800.638.9517

# uponor